



WESTVIEW HIGH SCHOOL
Emergency Action Plan: Sand Courts

13500 Camino Del Sur

San Diego, CA 92129

GPS Coordinates: Latitude: 32.967024 | Longitude: -117.148357

This is the plan of action for this athletic arena in the event of an emergency during an athletic practice or competition. Westview programs refer to Emergency Action plans in Coaches Binders for contact phone numbers.

Directions:

- From CAMINO DEL SUR, turn onto TORREY MEADOWS DRIVE
- Second driveway on the right is the Emergency Access Ramp to the stadium (custodian will have keys for gates)
- Responders should be positioned at the ramp to direct EMS to the field/s

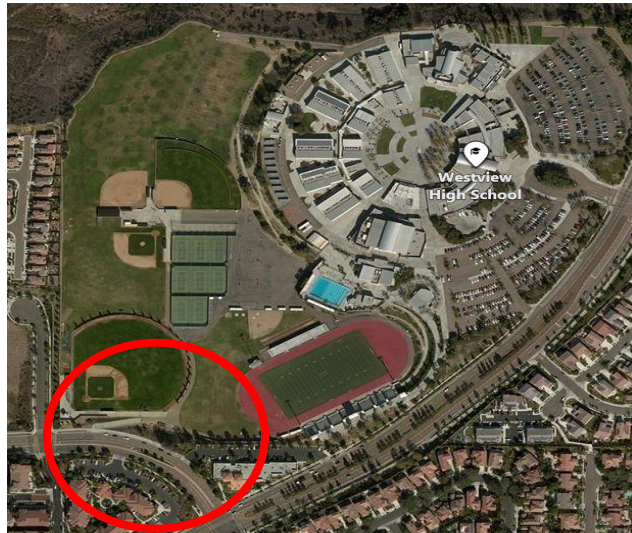
Response team:

Responder 1: Immediate care of the injured person

- Establish scene safety
- Check Circulation, Airway, Breathing
- Provide CPR if needed
- Provide First Aid if needed
- Activate EMS if needed

Responder 2: Activate EMS

- Call 9-1-1 and stay with injured person
- Provide 911 Operator with all necessary information
- Assist with CPR or First Aid as needed
- Answer dispatchers questions and relay directive of dispatcher's instructions – do not hang up until instructed to do so



Responder 3: Emergency Equipment Retrieval & Notify Custodian of Emergency

- Retrieve AED and First Aid kit if available (custodian or Westview staff will have keys if locked)
- Designate individuals to meet EMS and direct towards emergency site, custodian will have keys to all gates/locks

Additional Responders: Scene control

- Move bystanders away who are not providing first aid
- Be aware for individuals taking pictures or filming – ask them to refrain

CPR:

(non-responsive, no signs of normal breathing)

1. Position the victim on their back on a hard flat surface.
2. Put one hand on top of the other on middle of person's chest. Keeping arms straight, push hard and fast, (120 compressions/minute.) Let chest completely recoil after each compression.
3. Take turns with other responders as needed

AED:

1. Turn on AED and follow prompts
2. Remove clothing from chest and attach electrode pads as directed Stand clear while AED analyzes heart rhythm.
3. Keep area clear if AED advises a shock.
4. Follow device prompts for further action and continue until EMS arrives and takes over
5. If AED is deployed, it must be returned to the school for data download



NEAREST AED LOCATION: Baseball Storage Shed #27 (KEY DK29); Softball Shed #36 (KEY DK29); Gymnasium (KEY DK17); Pool/Lifeguard Office or Training Room (Custodial Access)