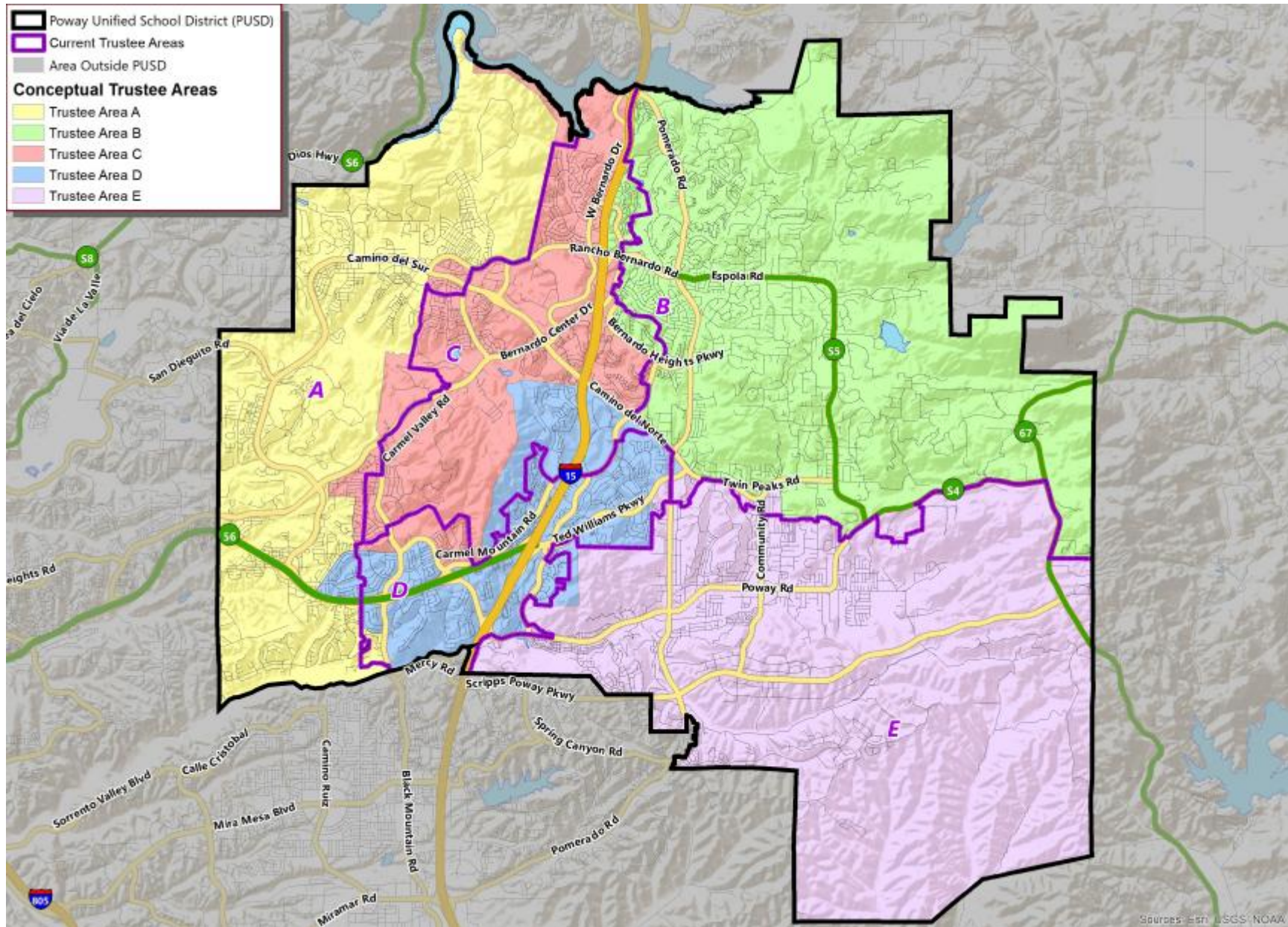


TRUSTEE AREAS

SCENARIO 4B



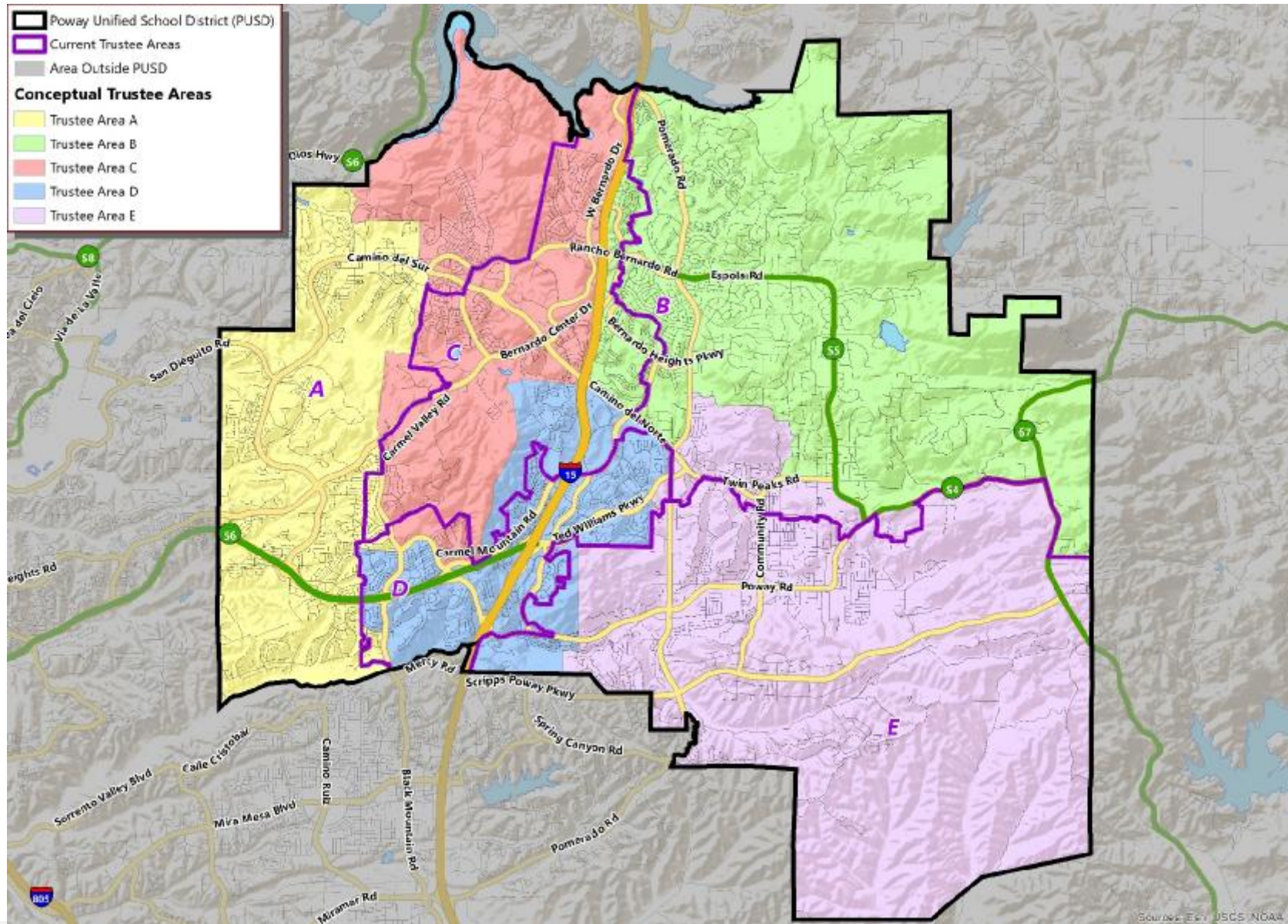
► DEMOGRAPHICS

SCENARIO 4B

Total Population:	204,828
Ideal Trustee Area Size:	40,966
Variance:	4.5%

TRUSTEE AREA	Trustee Area A		Trustee Area B		Trustee Area C		Trustee Area D		Trustee Area E	
	TP*	CVAP**	TP	CVAP	TP	CVAP	TP	CVAP	TP	CVAP
Population	42,293	22,898	40,527	31,608	40,433	27,548	40,869	28,688	40,706	27,416
Population Variance	3.2%	N/A	-1.1%	N/A	-1.3%	N/A	-0.2%	N/A	-0.6%	N/A
Hispanic/Latino	8.8%	9.4%	10.3%	7.3%	11.5%	9.7%	12.6%	11.3%	20.2%	13.1%
White	42.3%	49.6%	68.2%	78.0%	47.2%	62.8%	45.5%	56.4%	49.9%	63.3%
Black/African American	1.4%	1.3%	1.4%	2.8%	1.9%	1.2%	2.7%	3.1%	1.9%	2.8%
American Indian/Alaska Native	0.1%	0.1%	0.1%	0.0%	0.1%	0.2%	0.1%	0.1%	0.2%	0.1%
Asian	40.4%	35.3%	13.4%	8.1%	31.6%	22.7%	31.1%	25.7%	20.6%	17.6%
Native Hawaiian/Other Pacific Islander	0.2%	0.3%	0.1%	0.4%	0.2%	0.1%	0.3%	0.4%	0.3%	0.1%
Other	0.5%	0.0%	0.5%	0.0%	0.5%	0.0%	0.6%	0.0%	0.5%	0.0%
Two or More Races	6.3%	4.1%	5.9%	3.4%	6.9%	3.4%	7.1%	3.0%	6.5%	2.9%

▶ TRUSTEE AREAS
SCENARIO 5B



► DEMOGRAPHICS

SCENARIO 5B

Total Population:	204,828
Ideal Trustee Area Size:	40,966
Variance:	6.8%

TRUSTEE AREA	Trustee Area A		Trustee Area B		Trustee Area C		Trustee Area D		Trustee Area E	
TP* vs. CVAP**	TP	CVAP	TP	CVAP	TP	CVAP	TP	CVAP	TP	CVAP
Population	39,513	23,763	40,818	31,484	40,218	24,889	41,980	29,322	42,299	28,700
Population Variance	-3.5%	N/A	-0.4%	N/A	-1.8%	N/A	2.5%	N/A	3.3%	N/A
Hispanic/Latino	9.2%	9.4%	10.4%	7.7%	10.6%	9.1%	12.8%	11.0%	19.8%	13.2%
White	46.3%	54.6%	65.8%	76.9%	42.7%	57.5%	45.2%	56.9%	52.5%	64.9%
Black/African American	1.4%	1.3%	1.5%	2.6%	1.8%	1.3%	2.8%	3.1%	1.7%	2.7%
American Indian/Alaska Native	0.1%	0.2%	0.1%	0.1%	0.1%	0.0%	0.1%	0.2%	0.2%	0.1%
Asian	35.8%	30.4%	15.7%	9.0%	37.0%	28.1%	31.2%	25.3%	18.5%	16.0%
Native Hawaiian/Other Pacific Islander	0.2%	0.3%	0.1%	0.5%	0.2%	0.0%	0.3%	0.4%	0.2%	0.1%
Other	0.5%	0.0%	0.5%	0.0%	0.5%	0.0%	0.6%	0.0%	0.5%	0.0%
Two or More Races	6.5%	3.7%	5.7%	3.2%	6.9%	3.9%	6.9%	3.1%	6.5%	2.9%