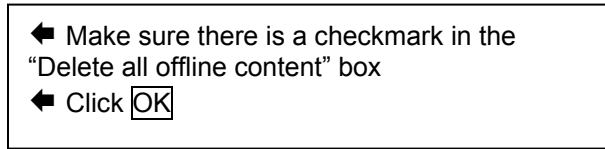
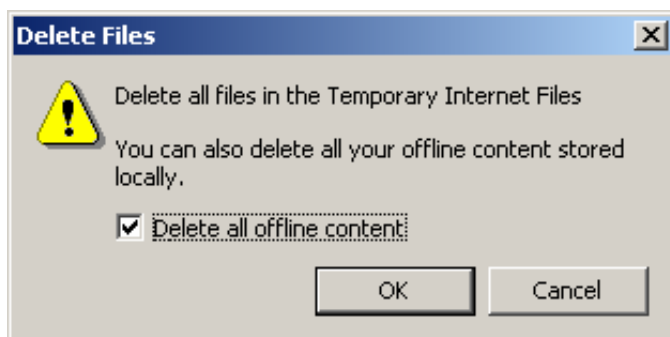
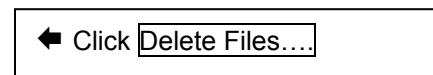
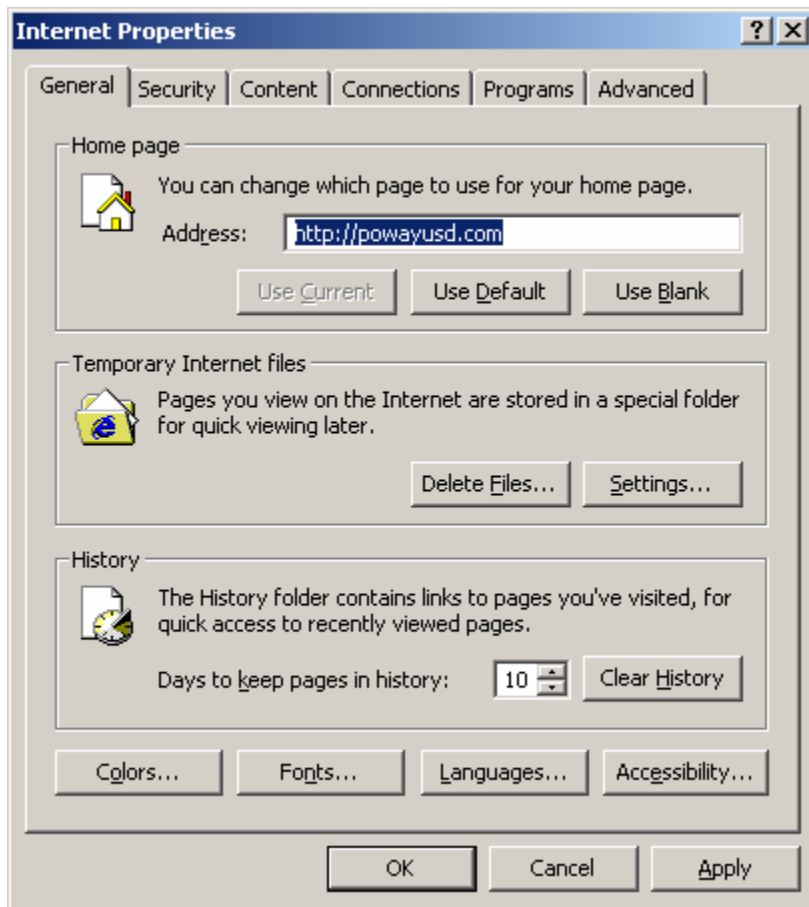


Learning Point -- Corrections to Internet Explorer  
September 23, 2003

If you are experiencing trouble viewing the LearningPoint Login Screen, using the following TIPS might resolve the issue

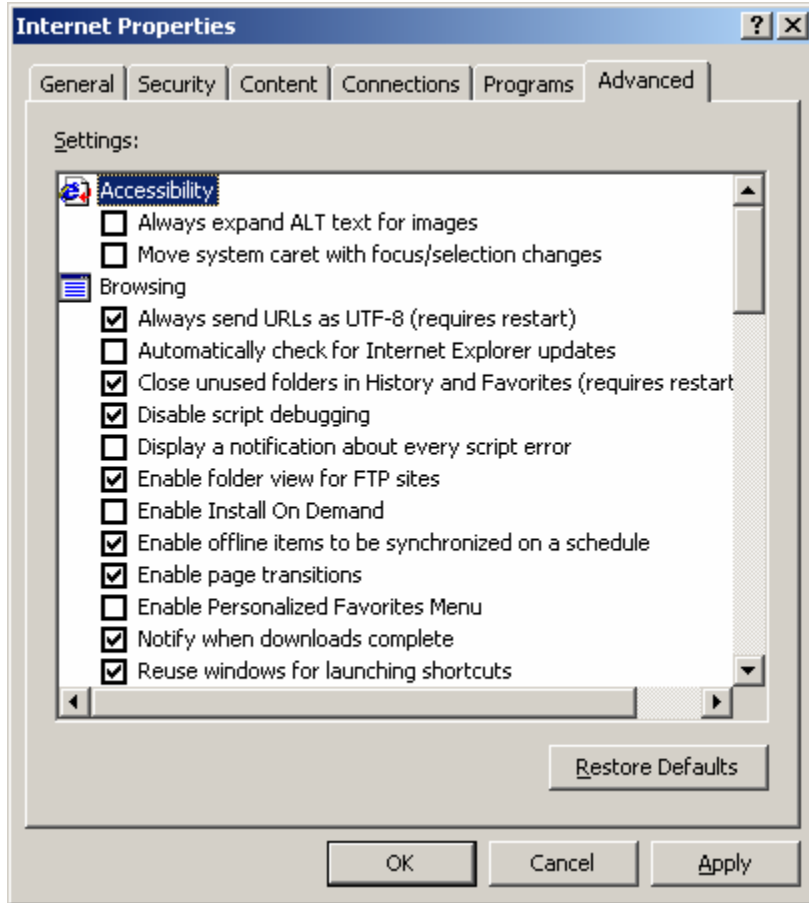
RIGHT CLICK on the Internet Explorer icon on your Desktop, then click Properties.  
You should see the following screen.

**Emptying Cached Files:**



Wait for the hourglass to go off, then click

## Resetting Advance Features:



← Click the Advanced tab to see this screen

← Click the box to CHECKMARK "Always send URLs as UTF-8" (say NO to restart)  
← Make sure there is NOT a checkmark in "Automatically check for Updates"

← Click  OK

RESTART YOUR COMPUTER, Log on, and wait for it to get to the Desktop

You should now be ready to open Internet Explorer, go to <http://www.learningpoint.org> and log in